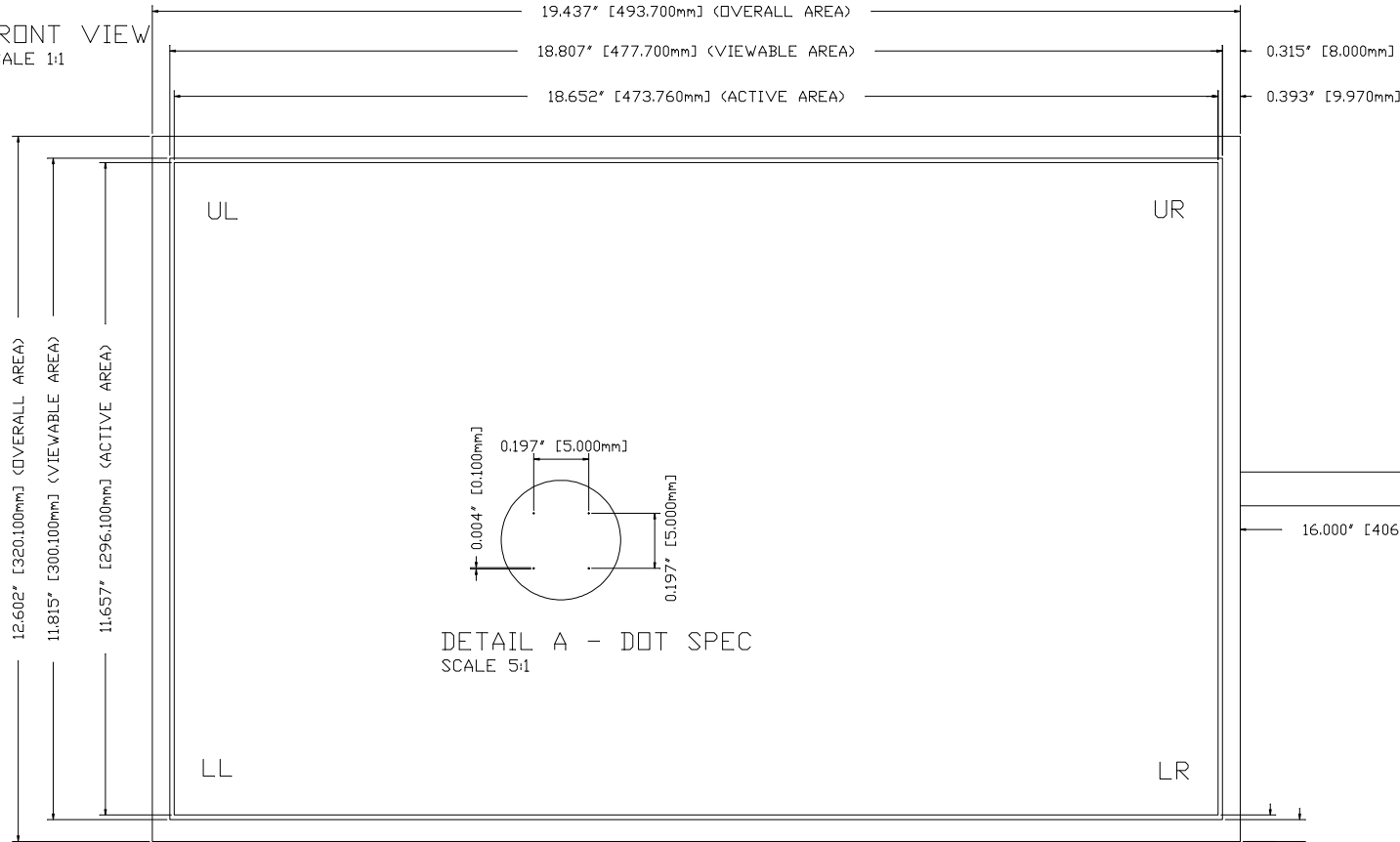


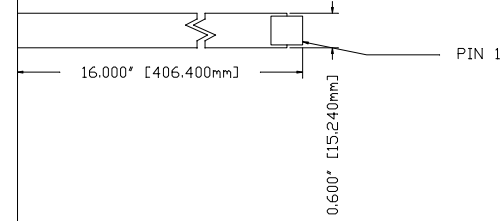
THIS DRAWING AND ALL TECHNICAL INFORMATION IS THE SOLE PROPERTY OF A.D. METRO. IT IS TO BE USED FOR THE PROJECT AND QUANTITY SPECIFIED HEREON. IT IS NOT TO BE REPRODUCED, COPIED, OR TRANSMITTED IN ANY FORM OR BY ANY MEANS, ELECTRONIC OR MECHANICAL, INCLUDING PHOTOCOPYING, RECORDING, OR BY ANY INFORMATION STORAGE AND RETRIEVAL SYSTEM, WITHOUT THE WRITTEN PERMISSION OF A.D. METRO. ANY SUCH REPRODUCTION OR TRANSMISSION IS STRICTLY PROHIBITED.

REVISIONS			
LET	DESCRIPTION	DATE	BY
A	INITIAL RELEASE	04-28-10	DZ
B	REMOVE ARMOR GLASS	01-27-12	DZ

FRONT VIEW  
SCALE 1:1



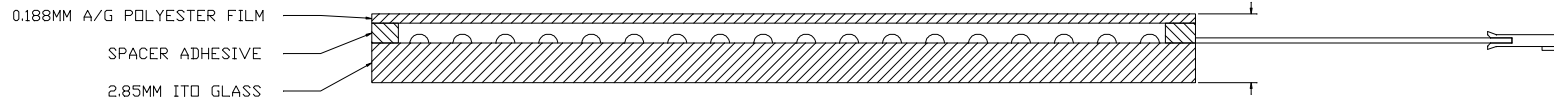
PIN	DESC
1	LL
2	UL
3	SENSE
4	LR
5	UR



NOTES:

- SUBSTRATE: 2.85MM ITO GLASS.
- SAFETY SEAM ON ALL EDGES
- ALL DIMENSIONS IN INCHES [MILLIMETERS]
- CABLE: 5-PIN FFC TAIL. CABLE MUST BE SENT SEPARATELY.
- CONNECTOR: AMP TYPE WITH 0.1" CENTERS, NON LATCHING, PART NUMBER 487378-4
- TOUCH SCREEN TO BE ACTIVATED WITHIN ACTIVE AREA ONLY. NON-ACTIVE AREA MUST HAVE A SCREENED ON DIELECTRIC AND NO CONDENSED DOTS. NO SILVER TRACES FROM LINEARITY PATTERN VISIBLE WITHIN VIEWABLE AREA.
- TOTAL SENSOR THICKNESS: 0.122" [3.100MM] APPROXIMATE

SIDE VIEW  
NOT TO SCALE



TOLERANCING  
UNLESS OTHERWISE SPECIFIED  
DIMENSIONS ARE IN INCHES  
DECIMAL ANGLES DEC  
DO NOT SCALE DRAWING

**ADmetro** A.D. METRO - 1181 PATERSON ST - OTTAWA, ONTARIO

**AD22.0ULTRA**

DRAWN BY: DZ PROJECT/PART NO. --- SCALE: ---  
 DATE: 01-27-12 SHEET: 1 SHEETS: 1  
 PROJECT NAME: PART NO. AD-22.0-SRU-100